



Light efficiency:

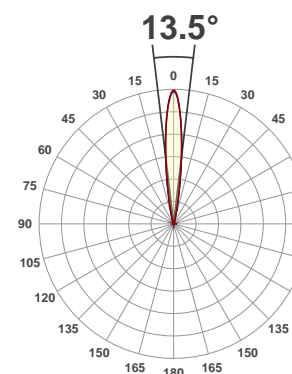
19 Lumen/Watt

Light quality:

CRI: 0.0

Color temperature:

0 K



Product name:

MOD HEX100

Test:

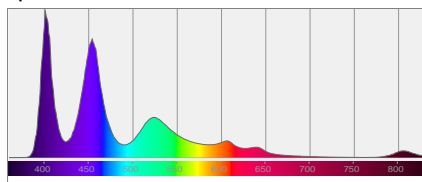
Full On

Date:

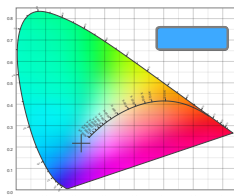
10/10/2017

Output: 1763 lm Power consumption: 93.6 W Peak: 22222 cd

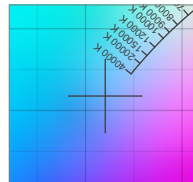
Spectral distribution



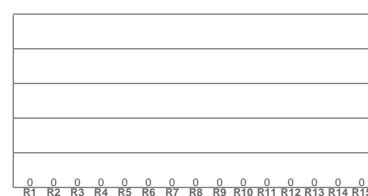
Color coordinates



Zoom color point

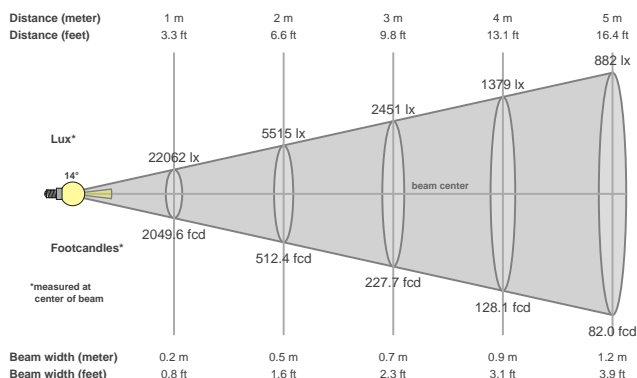


CRI R values



Color temperature	Color rendering index	Red component	Color fidelity	Color gamut	Color quality scale	Color coordinate cie 1931	Color coordinate cie 1931	Color coordinate	Color coordinate	Color divition from black body
CCT	CRI	CRI R9	TM30 Rf	TM30 Rg	CQS	x	y	u	v	Δuv
0 K	0.0	0.0	0.0	0.0	0.0	0.220	0.218	0.171	0.253	n/a

## Beam details



## Beam angles

Beam angle 50%	Field angle 10%	Cutoff angle 2,5%
13.5°	25.5°	39.9°

## Beam intensities

Peak intensity	Int. ratio in 120° cone	Int. ratio in 90° cone
22222 cd	98.2%	96.7%

## Power

Power	Power factor	Power frequency
93.6 W	0.63	60 Hz

Nominal voltage	Voltage	Current
230 V	115 V	1.29 A

## Beam intensities from 1-20m

1m	2m	3m	4m	5m	6m	7m	8m	9m	10m	11m	12m	13m	14m	15m	16m	17m	18m	19m	20m
3.3ft	6.6ft	9.8ft	13.1ft	16.4ft	19.7ft	23ft	26.2ft	29.5ft	32.8ft	36.1ft	39.4ft	42.7ft	45.9ft	49.2ft	52.5ft	55.8ft	59.1ft	62.3ft	65.6ft
22062lx	5515lx	2451lx	1379lx	882lx	613lx	450lx	345lx	272lx	221lx	182lx	153lx	131lx	113lx	98lx	86lx	76lx	68lx	61lx	55lx
2049.6fcd	512.4fcd	227.7fcd	128.1fcd	82fcd	56.9fcd	41.8fcd	32fcd	25.3fcd	20.5fcd	16.9fcd	14.2fcd	12.1fcd	10.5fcd	9.1fcd	8fcd	7.1fcd	6.3fcd	5.7fcd	5.1fcd